

**NITEKO**  
ILLUMINAZIONE



**2024**  
CATALOGUE



© Copyright 2024. All rights reserved

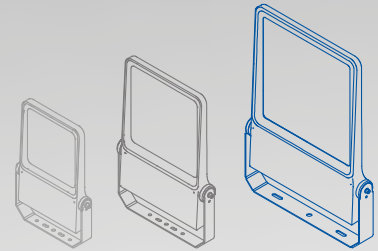
Any use, total or partial, of the contents included in this catalogue is prohibited, including the storage, reproduction, editing, diffusion or distribution of the contents by means of any technological platform, support or computer network, without the prior written authorization from Niteko Srl.

Photos, drawings and images shown in this catalogue, about products and their applications and installations, are for illustrative and demonstrative purposes only.

Finished printing in May 2024.

# Nettuno L

- ✔ Suitable for installations up to 35m above the ground
- ✔ Ideal for lighting sports facilities and outdoor stadiums
- ✔ Lighting of large areas and infrastructures



> Details



Adjustable bracket





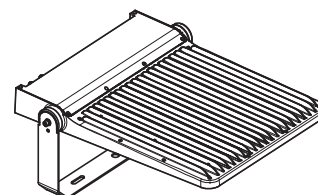
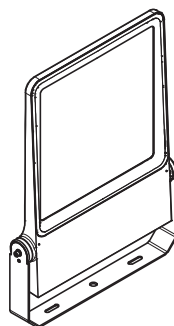
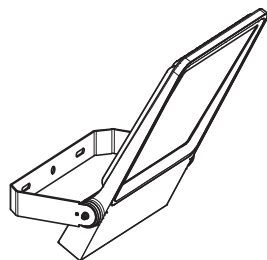
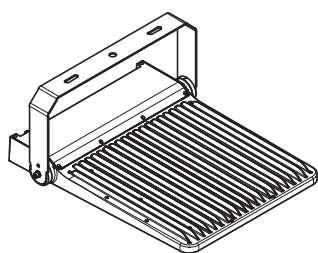
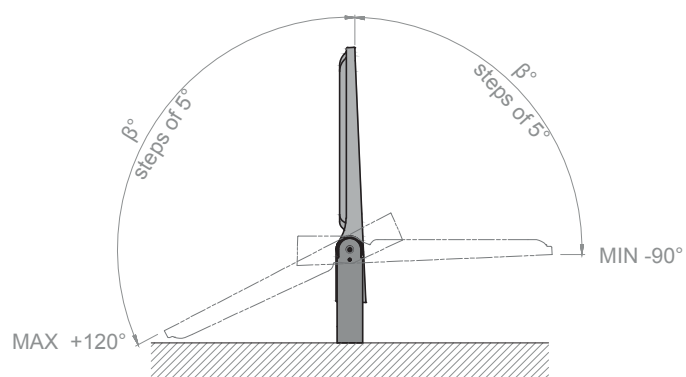
## > Rotation system

The adjustable bracket allows the floodlight to be oriented with steps of 5° by using toothy locking elements



Rotation

Minimum rotation: **-90°** | Maximum rotation: **+120°** | Steps: **5°**



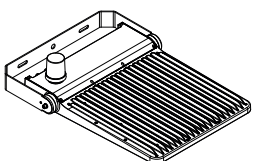
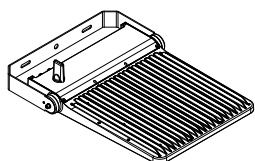
# Nettuno L

## > Technical features

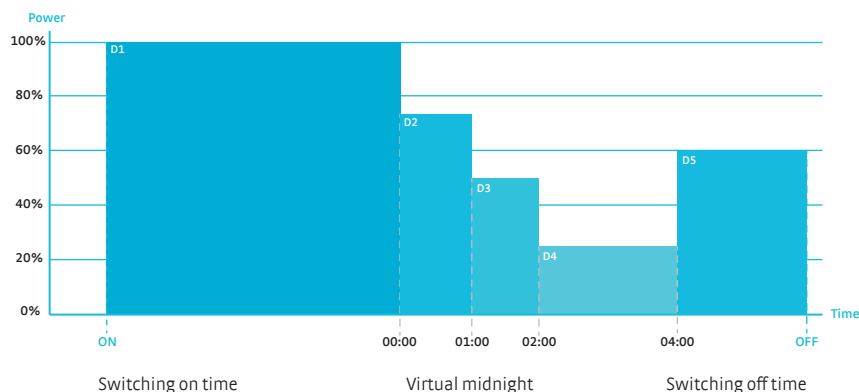
Main features	
Applications	Industrial, commercial, sports lighting: large indoor and outdoor areas
Device type	LED floodlight
Mounting type	Architectural with adjustable bracket, suspension with eyebolts, head-pole
Inclination	-90° ÷ +120° (steps of 5°)
Protection rating	IP66   IK09
	Electrical protection: EOS Protection System
	Chemical protection: VOC Free
Effective power	350 ÷ 550 W
Nominal luminous flux	48.144 ÷ 100.365 lm (@ T <sub>J</sub> =85°C, I <sub>F</sub> <500mA)
Luminaire efficacy	Up to 160 lm/W
Temperature	Operating temperature: -40°C ÷ +45°C   Storage temperature: -40°C ÷ +80°C
Warranty	Standard: 10 years   Optional: Lifetime
Energy rating	≥ A+++
Reference standards	EN 60598-1:2015 + A1:2018   EN 60598-2-5:2015 + A1:2018   EN 60068-2-6:2008
	EN 60068-2-27-2009
Patents and certifications	CE, RoHS, ENEC, IP66, IK09, Photobiological Safety, EOS Protection System, VOC Free, Vibration & Shock Test, Zhaga D4i
Optical features	
Photometries	Asymmetric, elliptic, symmetric
Light source	HI power LED
Colour temperature	2.200K   2.700K   3.000K   4.000K   5.000K   5.700K
Colour rendering index	CRI ≥ 70   CRI ≥ 80   CRI ≥ 90
LED modules	Independent and replaceable
Optics	PMMA, modular and replaceable
Light source efficiency	Up to 210 lm/W
Light source life	≥ 100.000 hours (L90B10 @ T <sub>J</sub> =85°C, I <sub>F</sub> <400mA)
Electrical features	
Power supply	Standard: 175 ÷ 264 V AC   50 / 60 Hz
	Optional: 120 ÷ 277 V AC   50 / 60 Hz
LED power current	I <sub>F</sub> <500mA
Driver	Efficiency: > 90 %   Power factor: PF > 0,97 (Active PFC)
Insulation class	Standard: Class II   Optional: Class I
Electrical connection	Standard: Outgoing power cable HØ7RN-F (length: 1 m)
	Optional: IP66 Socket/Plug connector kit
Electrical protection	Standard: Common Mode: 10 kV   Differential Mode: 6 kV
	Optional: Additional electrical protection with SPD device: 10 kV (C.M.)   10 kV (D.M.)   10 kA
Mechanical features	
Materials	Body: die-cast aluminium
	Screen: 5 mm extra clear tempered glass
	Accessory: Painted S235JR steel
Dimensions	887 x 662 x 89 mm
Weight	24,0 kg
Wind exposure	Frontal: 0,45 m²   Lateral: 0,07 m²
Colour	Standard: RAL 9023 (Pearl dark gray)   Optional: RAL colour on request
<b>Tolerance: luminous flux +/-5%, power +/- 5%, dimensions +/-1%, weight +/-3%</b>	

## > Power and control systems

LP - Lite programmable	FP - Full programmable	SR - Full programmable sensor ready
<b>PRG5:</b> automatic control up to 5 profiles	<b>PRG5:</b> automatic control up to 5 profiles	<b>PRG5:</b> automatic control up to 5 profiles
<b>DIM:</b> 1-10V analogue control	<b>DALI:</b> DALI digital control	<b>DALI:</b> DALI 2.0 digital control
<b>CLO LITE:</b> constant lighting control during the lifetime with a single profile	<b>CLO FULL:</b> constant lighting control during the lifetime up to 20 profiles	<b>CLO FULL:</b> constant lighting control during the lifetime up to 20 profiles
	<b>PLV:</b> Power Line Voltage control	<b>AUX:</b> Auxiliary command 24V / 3W
	<b>DCE:</b> Interface for centralised emergency lighting	<b>DCE:</b> Interface for centralised emergency lighting

NEMASCK.7: Radio control by 7-PIN NEMA SOCKET device	ZHAGASCK: Radio control by ZHAGA SOCKET device
	

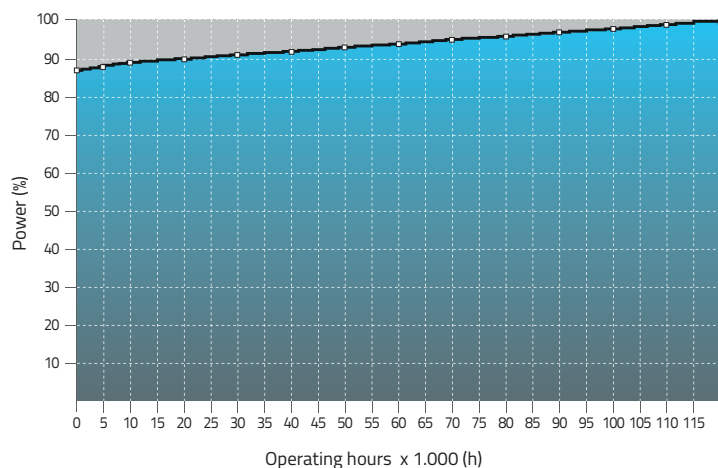
### PRG module



The PRG module allows to control and reduce the luminous flux of the lighting fixture from 10% to 100% of the maximum value, without the use of dedicated cables.

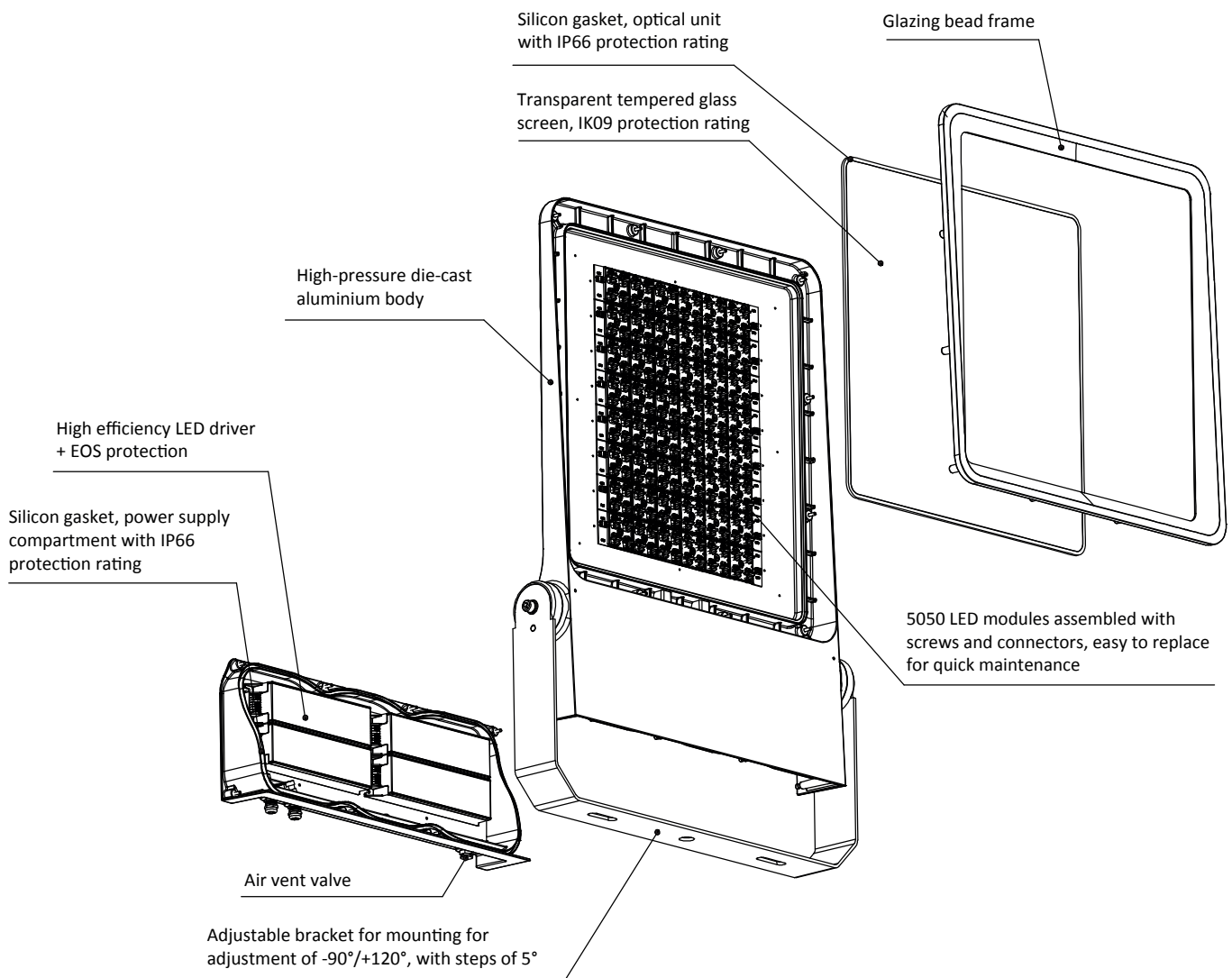
- D1: Time frame ON - 23:59 → Power 100%
- D2: Time frame 00:00 - 00:59 → Power 75%
- D3: Time frame 01:00 - 01:59 → Power 50%
- D4: Time frame 02:00 - 03:59 → Power 25%
- D5: Time frame 04:00 - OFF → Power 60%

### CLO FULL Function



The CLO function allows to gradually increase the level of light output over time from a lower initial luminous flux up to 100%, thus compensating the luminous flux degradation of the LED module during the lighting fixture entire lifetime. It can also serve as a means to reduce energy consumption.

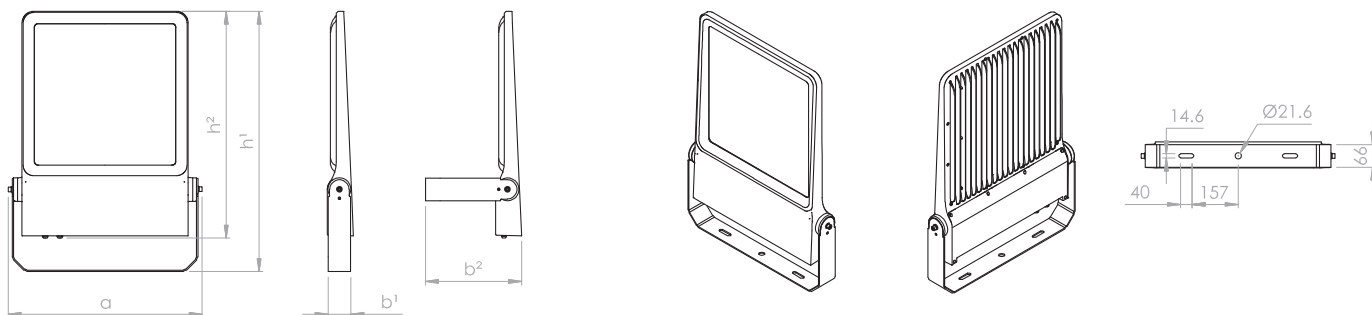
## > Exploded view drawing





# Nettuno L

## > Technical drawing



↔	Dimensions	a = <b>662 mm</b>   b1 = <b>89 mm</b>   b2 = <b>320 mm</b>   h1 = <b>887 mm</b>   h2 = <b>774 mm</b> L = <b>1 m</b> outgoing cable standard length	Weight	<b>24,0 kg</b>
---	------------	---	--------	----------------

## > Models

Product item code [ss-mm-wwW-xyyy-zz-rr]	Power	Nominal luminous flux [xyyy]			
		4070 5070 5770	3070	2770 4080	2270 2780 3080 5790
	W	lm			
NETTUNO-L-350W-xyyy-zz-rr	350,0	63.261	60.278	55.083	48.144
NETTUNO-L-400W-xyyy-zz-rr	375,0	67.063	67.063	67.063	67.063
	400,0	70.865	67.445	61.645	53.687
NETTUNO-L-450W-xyyy-zz-rr	425,0	74.668	71.029	64.926	56.414
	450,0	78.410	74.552	68.125	59.112
NETTUNO-L-500W-xyyy-zz-rr	500,0	89.417	85.149	77.818	67.907
NETTUNO-L-550W-xyyy-zz-rr	503,3	92.760	88.518	80.867	70.792
	551,0	100.365	95.686	87.430	76.487

## > Item code composition

Series	Model	Power	CCT	CRI	Optic	RAL Colour		
SS	MM	WW	XX	YY	ZZ	RR		
NETTUNO	L	350W 500W	22	2.200 K	70	CRI>70	A** Asymmetric (** = from 1 to 99) AB** Asymmetric (** = from 1 to 99) E* Elliptic (** = from 1 to 99) R* Rotosymmetric (** = from 1 to 99) *** Symmetric (** = from 01 to 999)	- 9023 Pearl dark grey - RRRR Customizable RAL colour
			27	2.700 K	80	CRI>80		
		400W 550W	30	3.000 K	90	CRI>90		
			40	4.000 K				
			50	5.000 K				
			57	5.700 K				

## > Output flux multiplier - Light intensity class

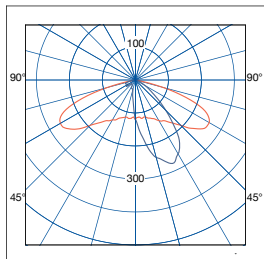
In order to calculate the real flux of the device, the efficiency of the chosen optic must be multiplied by the nominal light flux value shown in the table. Each optic corresponds to a class of light intensity G\*.

<b>A2</b>	0,85	G*4	<b>A3</b>	0,87	G*6	<b>A4</b>	0,83	G*6	<b>A7</b>	0,79	G*2	<b>A8</b>	0,82	G*2
<b>A13</b>	0,81	G*6	<b>E3</b>	0,87	G*6	<b>25</b>	0,90	G*6	<b>50</b>	0,90	G*6	<b>100</b>	0,86	G*6

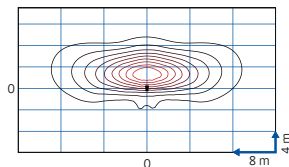
> Photometries

**Asymmetric**

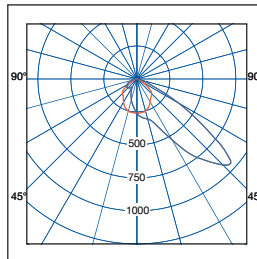
[A2] - Asymmetric 150°×35°



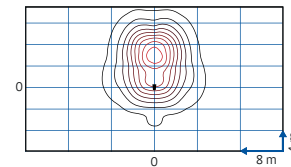
H = 8 m



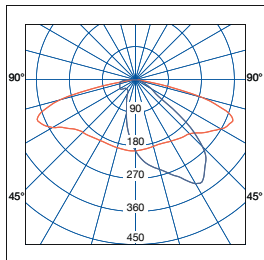
[A3] - Asymmetric 120°×50°



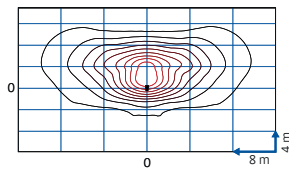
H = 8 m



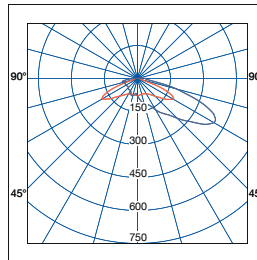
[A4] - Asymmetric 145°×65°



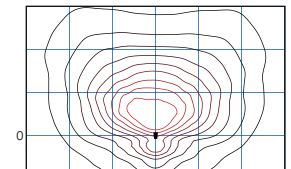
H = 8 m



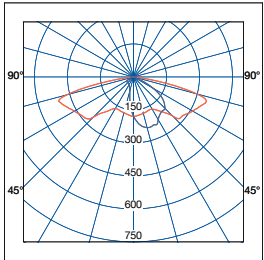
[A7] - Asymmetric 120°×80°



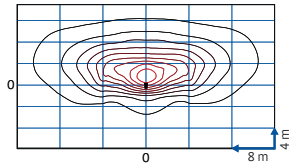
H = 8 m



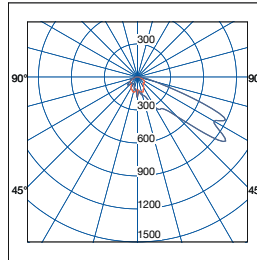
[A8] - Asymmetric 155°×55°



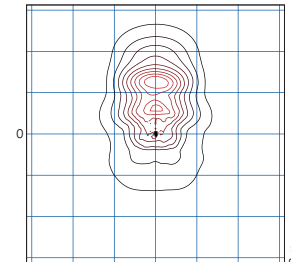
H = 8 m



[A13] - Asymmetric 135°×60°

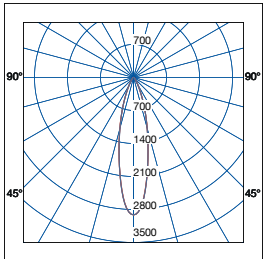


H = 8 m

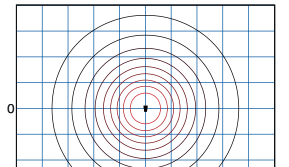


**Symmetric**

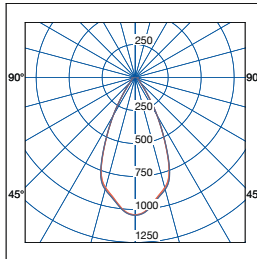
[25] - Symmetric 35°



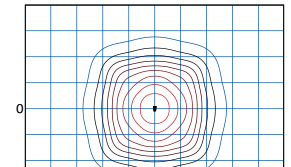
H = 8 m



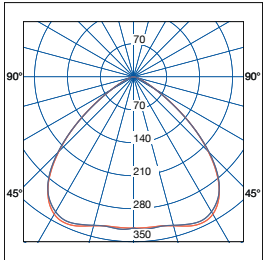
[50] - Symmetric 60°



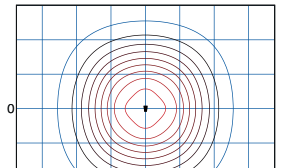
H = 8 m



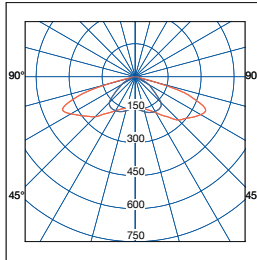
[100] - Symmetric



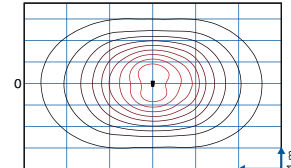
H = 8 m



[E3] - Elliptic 145°×110°



H = 8 m

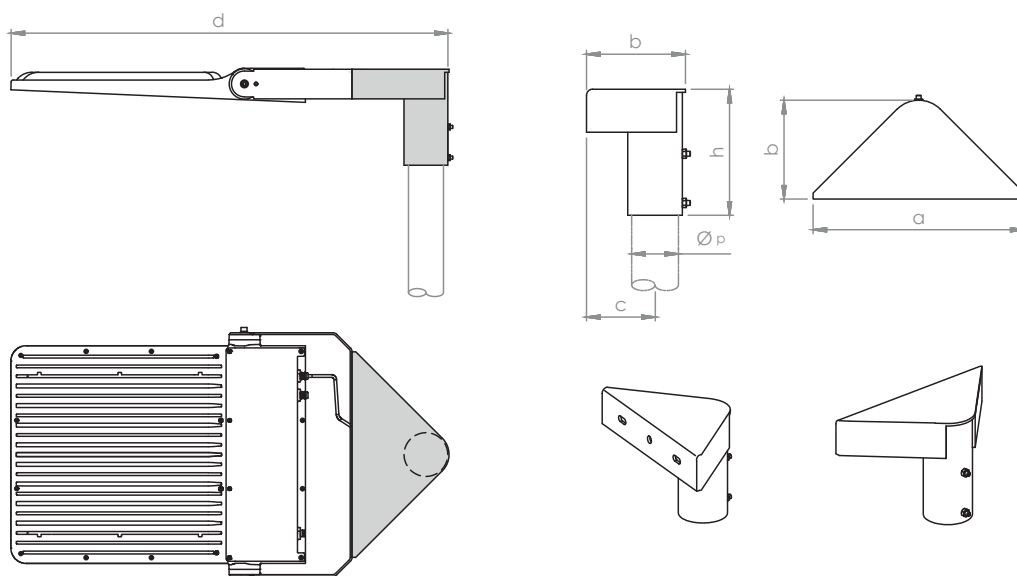


More photometries are available on request

## > Mounting options

### Accessory for head-pole mounting

### KM-NETTUNO-L-TP



#### Dimensions

a = 535 mm | b = 253 mm | c = 193 mm | d = 1140 mm | h = 250 mm  
 Øp = Ø48 ÷ 60 mm; Ø60 ÷ 76 mm; Ø89 ÷ 114 mm pole - 130 mm depth

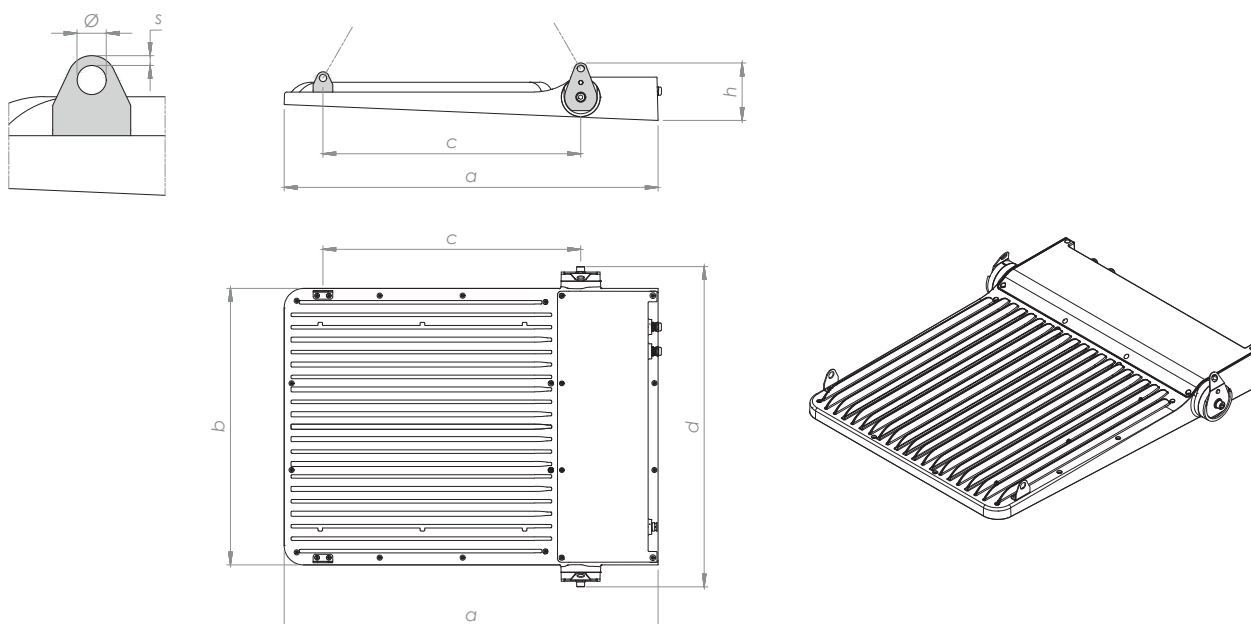


#### Weight

10 Kg

### Accessory for suspension mounting

### KM-NETTUNO-L-SPS



#### Dimensions

a = 767 mm | b = 567 mm | c = 528 mm | d = 657 mm |  
 h = 118 mm | Ø = 15 mm | s = 5 mm



#### Weight

0,3 Kg

# Nettuno L

> Installations





# 2024 CATALOGUE

Technical data may change over time.  
For updates, please visit [www.niteko.com](http://www.niteko.com)  
or contact us at [info@niteko.com](mailto:info@niteko.com).



**NITEKO SRL**

Viale della Libertà, 8  
74020 Montemesola (TA) - ITALY

T. [+39] 099 567 12 19

F. [+39] 099 567 11 12

**[www.niteko.com](http://www.niteko.com)**  
**[info@niteko.com](mailto:info@niteko.com)**