

NITEKO 
ILLUMINAZIONE



2024
CATALOGUE



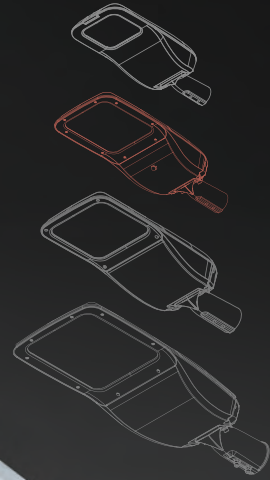
© Copyright 2024. All rights reserved

Any use, total or partial, of the contents included in this catalogue is prohibited, including the storage, reproduction, editing, diffusion or distribution of the contents by means of any technological platform, support or computer network, without the prior written authorization from Niteko Srl.

Photos, drawings and images shown in this catalogue, about products and their applications and installations, are for illustrative and demonstrative purposes only.

Finished printing in May 2024.

Icona S



- ✓ Ideal for lighting urban and extra-urban roads, parkings, stations
- ✓ Easy maintenance thanks to the separation of the optical compartment from the power supply one
- ✓ Suitable for installations up to 12m above the ground
- ✓ Direct replacement of discharge lamps up to 250W



RoHS



> Details



Mast arm mounting



Head-pole mounting





> Quick opening system

Tool-free and quick opening system that facilitates installation and maintenance

> Adjustable system

Integrated adjustable system for mast arm or head-pole mounting



Rotation

Minimum rotation: **-15°**

Maximum rotation: **+15°**

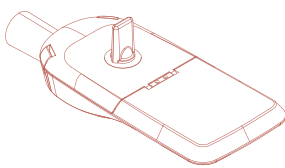
Steps: **5°**

> Technical features

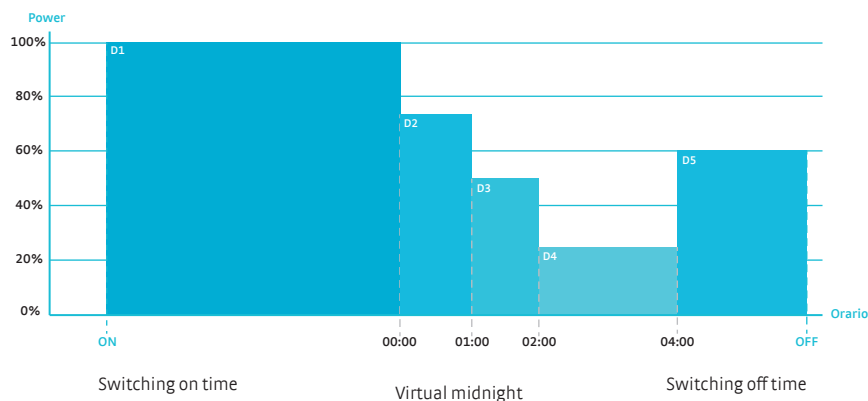
Mean features	
Applications	Street lighting: residential and urban streets, squares, gardens, cycling lanes, parking
Device type	LED street lighting fixture
Mounting type	Head-pole, mast arm
Inclination	Head-pole: -15° + +15° (steps of 5°) Mast arm: -15° + +15° (steps of 5°)
Protection rating	IP66 IK09
	Electrical protection: EOS Protection System
	Chemical protection: VOC FREE
Effective power	20 - 100 W
Nominal luminous flux	2.961 - 18.047 lm (@ T _j =85°C, I _F <500mA)
Luminaire efficacy	Up to 160 lm/W
Temperature	Operating temperature: -40°C - +50°C Storage temperature: -40°C - +80°C
Warranty	Standard: 10 years Optional: Lifetime
Energy rating	≥ A+++
Reference standards	EN 60598-1:2015 + A1:2018 EN 60598-2-3:2003 + A1:2011 IEC TR 62778:2014 IEC 62471 CISPR 15:2013
	+ AMD1 IEC 61547:2009 IEC 61000-3-2:2018 IEC 61000-3-3:2013 + AMD1 EN 55015:2013 + AMD1
	EN 61547:2009 EN 61000-3-2:2014 EN 61000-3-3:2013 EN 60068-2-6:2008 EN 60068-2-27:2009
Patents and certifications	CE, RoHS, ENEC, ENEC +, IP66, IK09, Photobiological Safety, EOS Free, VOC Free, Vibration & Shock Test, Zhaga D4i
Optical features	
Photometries	Asymmetric, elliptic, rotosymmetric, for pedestrian crossings
Light source	HI power LED
Colour temperature	2.200K 2.700K 3.000K 4.000K 5.000K 5.700K
Colour rendering index	CRI >70 CRI >80 CRI >90
LED modules	Independent and replaceable
Optics	PMMA, modular and replaceable
Light source efficiency	Up to 210 lm/W
Light source life	>100.000 hours (L90B10 @ T _j = 85°C, I _F <400mA)
Electrical features	
Power supply	Standard: 175 - 264 V AC 50 / 60 Hz
	Optional: 120 - 277 V AC 50 / 60 Hz
	Optional 24 V: 18 - 32 V DC
	Optional 12 V: 9 - 18 V DC
LED power current	IF <500mA
Driver	Efficiency: η > 90 % Power Factor: PF > 0,97 (Active PFC)
Insulation class	Standard: Class II Optional: Class I
Electrical connection	Safety switch
Electrical protection	Standard: Common Mode 10kV Differential Mode 6kV
	Optional: Additional electrical protection with SPD device: 10 kV (C.M.) 10 kV (D.M.) 10 kA
Mechanical features	
Materials	Body: die-cast aluminium with built-in heat sink
	Screen: 4 mm extra clear tempered glass
Dimensions	Body: 535 x 225 x 96 mm Head-pole mounting: 540 x 255 x 224 mm Mast arm mounting: 647 x 255 x 117 mm
Weight	5,8 kg
Wind Exposure	Lateral: 0,04 m2 Frontal tilt (15°): 0,06 m2 Base: 0,12 m2
Colour	Standard: RAL 9023 (Pearl dark grey) Optional: RAL colour on request
Tolerance: luminous flux +/-5%, power +/- 5%, dimensions +/-1%, weight +/-3%	

> Power and control systems

LP - Lite programmable	FP - Full programmable	SR - Full sensor ready programmable
PRG5: automatic control up to 5 profiles	PRG5: automatic control up to 5 profiles	PRG5: automatic control up to 5 profiles
DIM: 1-10V analogue control	DALI: DALI digital control	DALI 2.0: DALI 2.0 digital control
CLO LITE: constant lighting control during the lifetime with a single profile	CLO FULL: constant lighting control during the lifetime up to 20 profiles	CLO FULL: constant lighting control during the lifetime up to 20 profiles
	PLV: Power Line Voltage control	AUX: auxiliary command 24V / 3W
	DCE: Interface for centralised emergency lighting	DCE: Interface for centralised emergency lighting

NEMASCK.7: Radio control by 7-PIN NEMA SOCKET device	ZHAGASCK: Radio control by ZHAGA SOCKET device
	

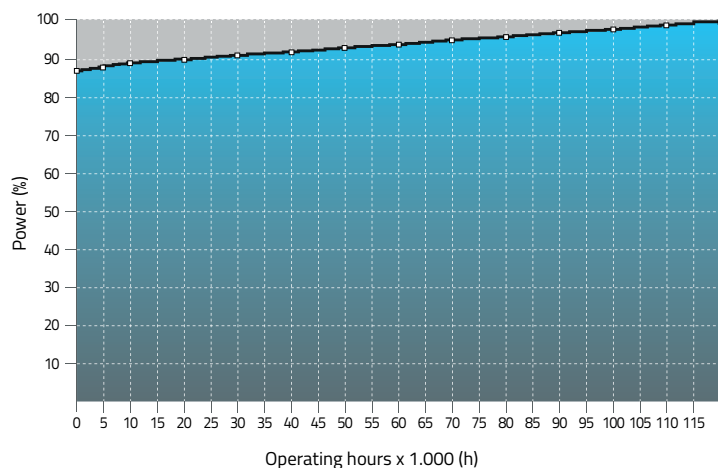
PRG module



The PRG module allows to control and reduce the luminous flux of the lighting fixture from 10% to 100% of the maximum value, without the use of dedicated cables.

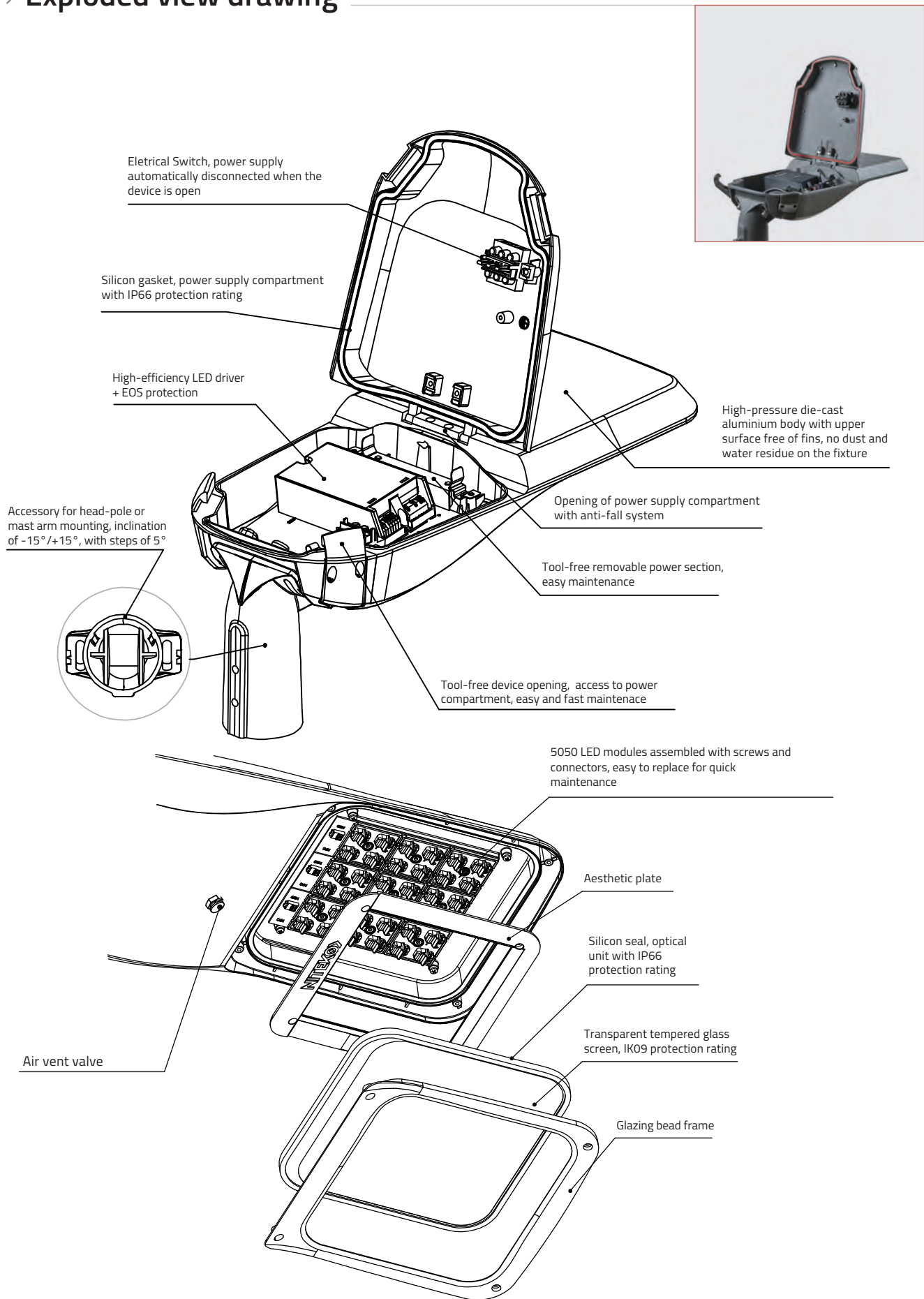
- D1: time frame ON - 23:59 → Power 100%
- D2: time frame 00:00 - 00:59 → Power 75%
- D3: time frame 01:00 - 01:59 → Power 50%
- D4: time frame 02:00 - 03:59 → Power 25%
- D5: time frame 04:00 - OFF → Power 60%

CLO Full function



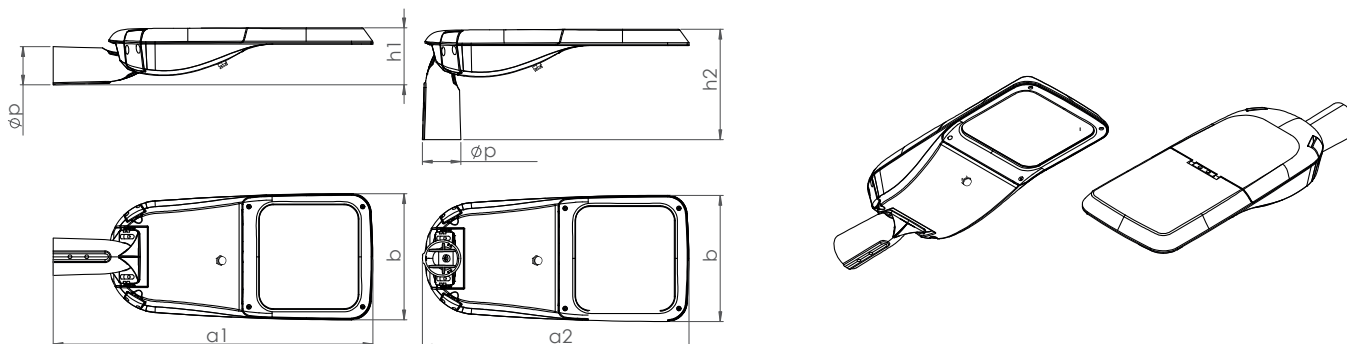
The CLO function allows to gradually increase the level of light output over time from a lower initial luminous flux up to 100%, thus compensating the luminous flux degradation of the LED module during the lighting fixture entire lifetime. It can also serve as a means to reduce energy consumption.

> Exploded view drawing



Icona S

> Technical drawing



↔	Dimensions	a1 = 647 mm a2 = 540 mm b = 255 mm h1 = 117 mm h2 = 224 mm Øp = 60÷48 mm pole - 100 mm depth	⚖	Weight	5,8Kg
---	-------------------	---	---	---------------	--------------

> Models

Product item code [ss-mm-wwW-xyyy-zz-rr]	Power	Nominal luminous flux [xyyy]			
		4070 5070 5770	3070	2770 4080	2270 2780 3080 5790
	W	lm			
ICONA-S-20W-xyyy-zz-rr	20,8	3.860	3.672	3.333	2.961
ICONA-S-30W-xyyy-zz-rr	30,9	5.582	5.298	4.816	4.260
ICONA-S-40W-xyyy-zz-rr	39,2	6.882	6.519	5.930	5.209
ICONA-S-50W-xyyy-zz-rr	51,3	9.591	9.120	8.279	7.341
ICONA-S-60W-xyyy-zz-rr	62,0	11.426	10.842	9.858	8.713
ICONA-S-70W-xyyy-zz-rr	71,4	12.998	12.319	11.209	9.857
ICONA-S-80W-xyyy-zz-rr	83,0	15.336	14.578	13.247	11.693
ICONA-S-90W-xyyy-zz-rr	90,2	16.498	15.670	14.247	12.553
ICONA-S-100W-xyyy-zz-rr	99,9	18.047	17.126	15.580	13.684

> Item code composition

Series	Model	Power	CCT	CRI	Optics	Colour
SS	MM	WW	XX	YY	ZZ	RR
ICONA	S	20W 70W 30W 80W 40W 90W 50W 100W 60W	22 2.200 K 27 2.700 K 30 3.000 K 40 4.000 K 50 5.000 K 57 5.700 K	70 CRI>70 80 CRI>80 90 CRI>90	A** Asymmetric (** = from 1 to 99) AB** Asymmetric (** = from 1 to 99) E** Elliptic (** = from 1 to 99) R** Rotosymmetric (** = from 1 to 99) PCDX** Right Asymmetric (** = from 1 to 99) PCSX** Left Asymmetric (** = from 1 to 99)	9023 Pearl Dark G. RRRR Optional colour on request

> Output flux multiplier - Light intensity class

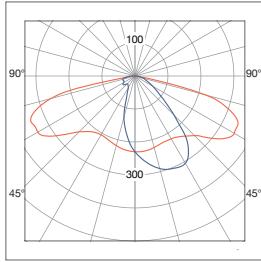
In order to calculate the real flux of the device, the efficiency of the chosen optic must be multiplied by the nominal light flux value shown in the table. Each optic corresponds to a class of light intensity G*.

A1	0,84	G*6	A2	0,85	G*4	A3	0,87	G*6	A4	0,83	G*6	A7	0,79	G*2
A8	0,82	G*1	A9	0,85	G*4	PCDX	0,85	G*6	PCSX	0,85	G*6	E3	0,87	G*6

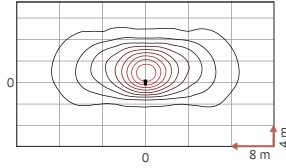
> Photometries

Asymmetric

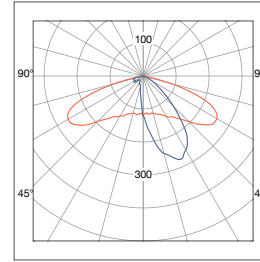
[A1] - Asymmetric 150°x50°



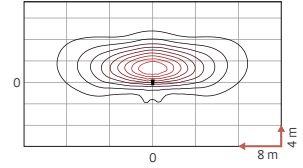
H = 8 m



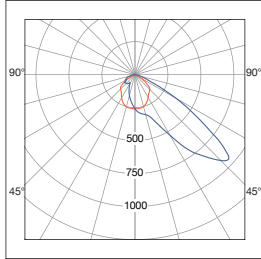
[A2] - Asymmetric 140°x45°



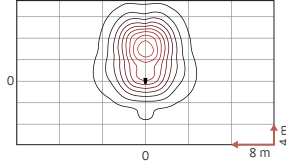
H = 8 m



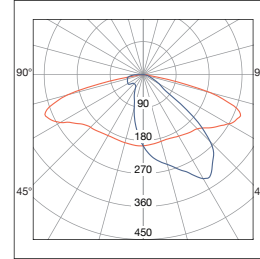
[A3] - Asymmetric 90°x60°



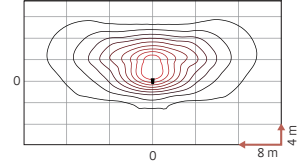
H = 8 m



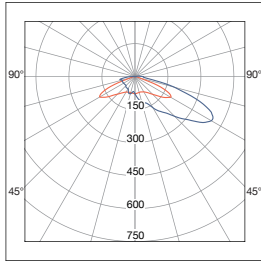
[A4] - Asymmetric 145°x55°



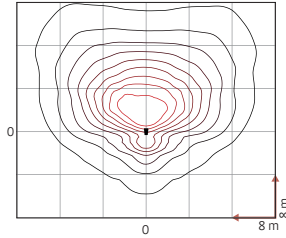
H = 8 m



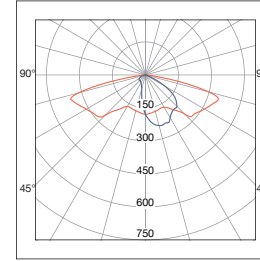
[A7] - Asymmetric 140°x70°



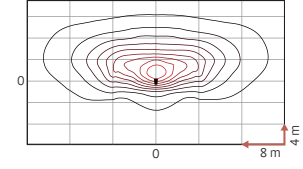
H = 8 m



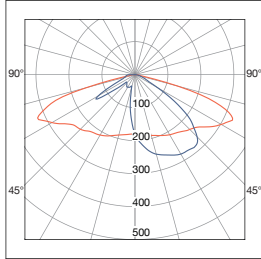
[A8] - Asymmetric 155°x60°



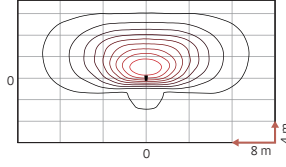
H = 8 m



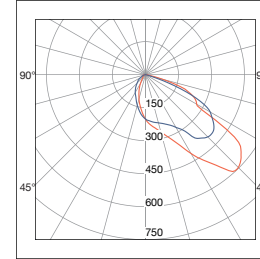
[A9] - Asymmetric 145°x55°



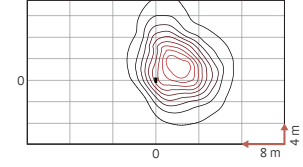
H = 8 m



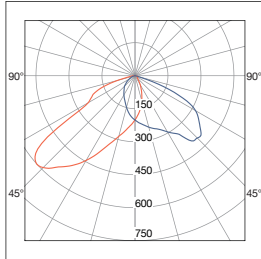
[PCDX] - Right Asymmetric 65°x60°



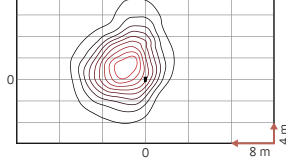
H = 8 m



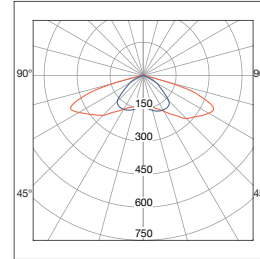
[PCSX] - Left Asymmetric 65°x60°



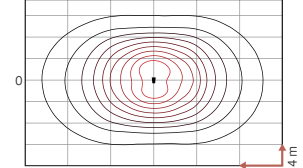
H = 8 m



[E3] - Elliptic 145°x110°



H = 8 m

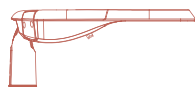


More photometries are available on request

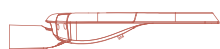
Elliptic

> Mounting options

Integrated adjustable system with 5° steps for head-pole or mast arm mounting.



HEAD-POLE MOUNTING



MAST ARM MOUNTING



Icona S

> Installations



2024 CATALOGUE

Technical data may change over time.
For updates, please visit www.niteko.com
or contact us at info@niteko.com.



NITEKO SRL

Viale della Libertà, 8
74020 Montemesola (TA) - ITALY

T. [+39] 099 567 12 19

F. [+39] 099 567 11 12

www.niteko.com

info@niteko.com