

NITEKO 
ILLUMINAZIONE



CATALOGUE 2023



urban kit

**The allure of yesterday
meets the technology of today**





Urban Kit

- ✓ Maximum adaptability to any luminaire with traditional lighting, also recessed ones
- ✓ Ideal for preserving the cultural value of historic appliances
- ✓ High ease of installation in a short time
- ✓ Maximum efficiency at reduced costs



Commercial



Urban



Industrial



Sports



Architectural



Urban Kit

Traditional luminaire



Electrical compartment



Optical compartment



> Applications

Shopping centers

Industrial buildings

Facilities and shelters

Urban furnishings

Squares, parks and gardens

> Main features

Universal application: Urban Kit is suitable for any type of urban luminaire, not just for lanterns with high cultural value, but also for the new generation ones with traditional lighting technology. The kit is also suitable for recessed applications (shelters, false ceilings, etc.).

Easy installation: the application of the Kit does not require structural modifications of the fixture and is carried out without any difficulty in a short time.

> Certifications



Dasa-Rägister
UNI EN ISO 9001:2015
IQ-0818-01



Dasa-Rägister
EN ISO 14001:2015
IE-0115-01

RoHS



Urban Kit



› Customised design

The adaptation plate is designed to mechanically fit the illuminating body to be modified with the LED technology.



Urban Kit

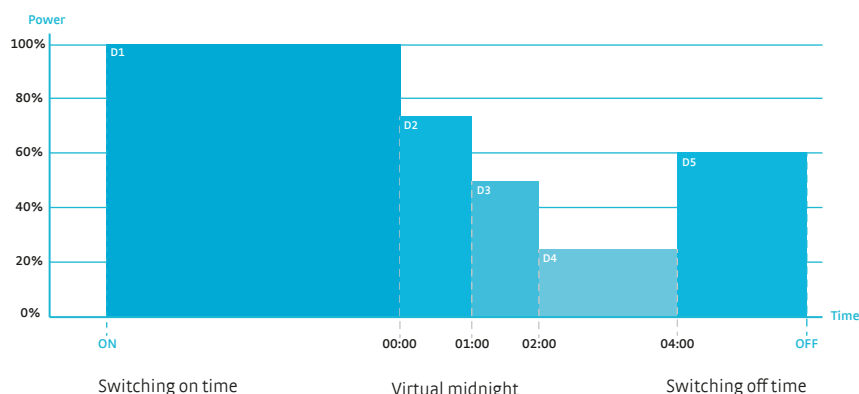
> Technical features

Main features	
Applications	Urban lighting: residential and urban streets, squares, gardens, parkings, cycle lanes Industrial lighting: service stations, parkings, industrial areas, infrastructures
Device type	Retrofit LED kit for urban, artistic and industrial lighting fixtures
Mounting type	Assembly and customised adaptation into the traditional lighting body
Protection rating	Standard: IK08 Optical unit: IP66 Electrical unit: IP20
	Optional: IK08 Optical unit: IP66 Electrical unit: IP66
	Optional: IK00 Optical unit: IP20 Electrical unit: IP20
	Electrical protection: EOS Protection System Chemical protection: VOC Free
Actual power	15 ÷ 70 W
Nominal luminous flux	2.185 ÷ 11.996 lm (@ T _j =85°C, I _f <500mA)
Device light efficiency	Up to 160 lm/W
Temperature	Operating temperature: -40°C ÷ +45°C Storage temperature: -40°C ÷ +80°C
Warranty	20 years or 100.000 hours
Energy rating	≥A++
Reference standards	EN 60598-1 EN 60598-2-3 EN 62471 EN 55015
	EN 61547 EN 61000-3-2 EN 61000-3-3
Patents and certifications	RoHS, CE, Photobiological Safety, EOS Protection System, VOC Free
Optical features	
Photometries	Asymmetric, rotosymmetric, elliptic, symmetric, for pedestrian crossings
Light source	HI power LED
Colour temperature	2.200K 2.700K 3.000K 4.000K 5.000K 5.700K 5 Step MacAdam
Colour rendering index	CRI≥70 CRI≥80 CRI≥90
LED modules	Independent and replaceable
Optics	PMMA, modular and replaceable
Light source efficiency	Up to 210 lm/W
Light source life	≥100.000 hours (L90B10 @ T _j =85°C, I _f <400mA)
Electrical features	
Power supply	Standard: 175 ÷ 264 V AC. 50 / 60 Hz
	Optional: 120 ÷ 277 V AC 50 / 60 Hz
LED power current	I _f <500mA
Driver	Efficiency: η > 95 % Power factor: PF > 0,97 (Active PFC)
Insulation class	Standard: Class II Optional: Class I
Electrical connection	Power cable with IP66 protected connector
Electrical protection	Common Mode: 10 kV Differential Mode: 6 kV
	Additional electrical protection with SPD device: 10 kV (C.M.) 10 kV (D.M.) 10 kA
Mechanical features	
Materials	Dissipating body: die-cast aluminium Accessories: pickled aluminium
	Screen (standard): IP66 version with 4 mm transparent tempered flat glass
Dimensions	Heat sink with optical group: 208 x 265 x 50 mm Footprint with driver: 225 x 265 x 107 mm
Weight	3,5 kg (heat sink with optical group complete with glass, plate, mounting accessories and driver)
Colour	Dissipating body: RAL 9005 (Black) Adaptation mask: optional colour on request
Tolerance: luminous flux +/-5%, power +/- 5%, dimensions +/-1%, weight +/-3%	

> Power and control systems

LP - Lite programmable	FP - Full programmable	SR - Full programmable sensor ready
PRG5: automatic control up to 5 profiles	PRG5: automatic control up to 5 profiles	PRG5: automatic control up to 5 profiles
DIM: 1-10V analogue control	DALI: DALI digital control	DALI: DALI 2.0 digital control
CLO LITE: constant lighting control during the lifetime with a single profile	CLO FULL: constant lighting control during the lifetime up to 20 profiles	CLO FULL: constant lighting control during the lifetime up to 20 profiles
	PLV: Power Line Voltage control	AUX: Auxiliary command 24V / 3W
	DCE: Interface for centralised emergency lighting	DCE: Interface for centralised emergency lighting

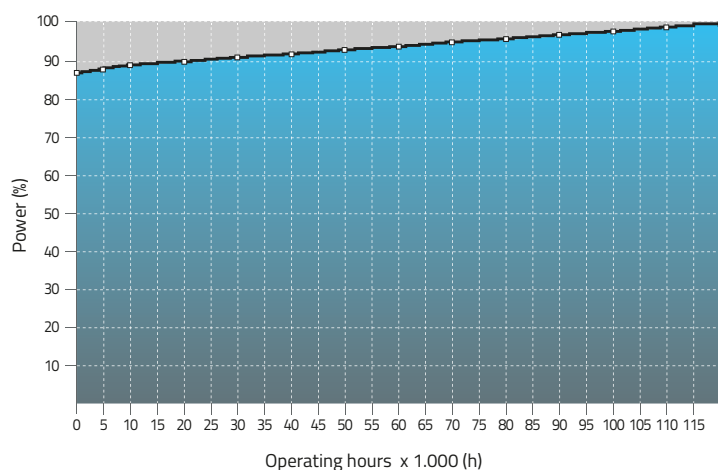
PRG module



The PRG module allows to control and reduce the luminous flux of the lighting fixture from 10% to 100% of the maximum value, without the use of dedicated cables.

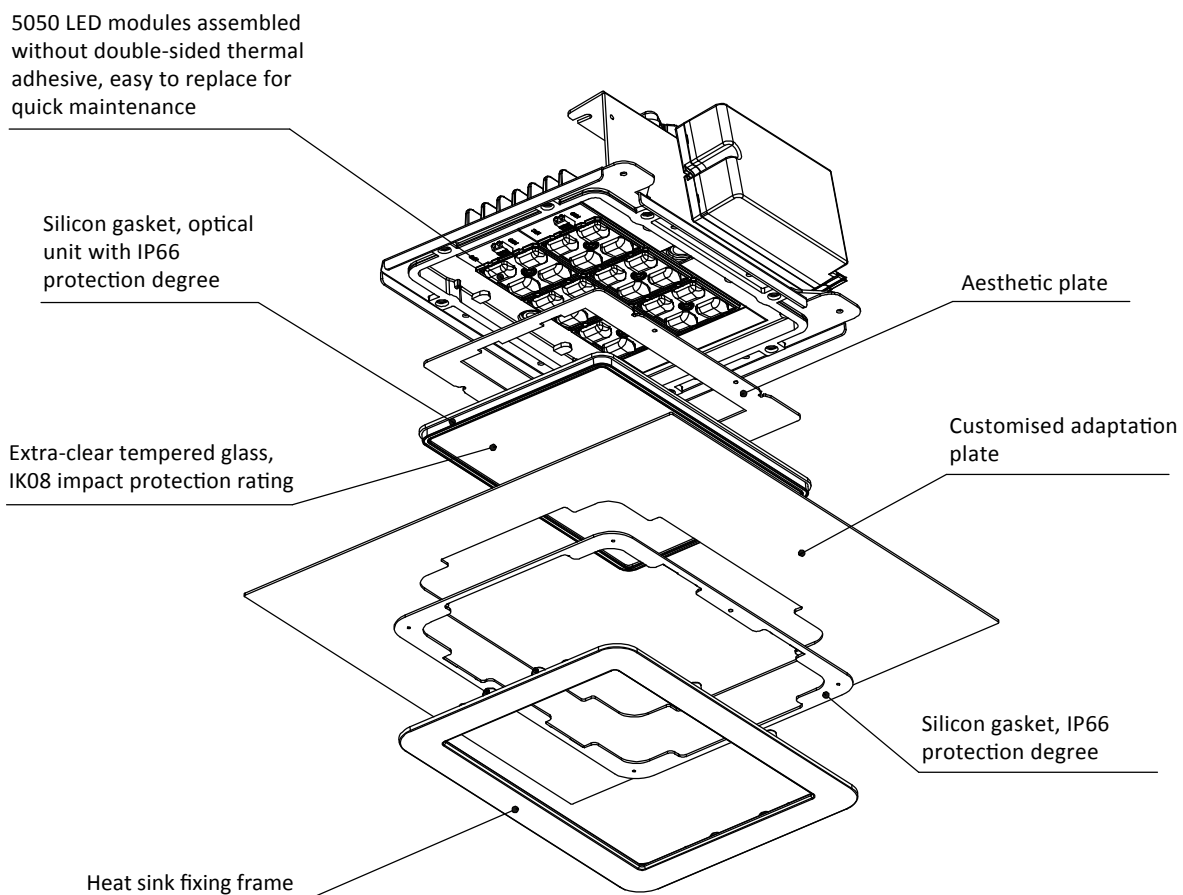
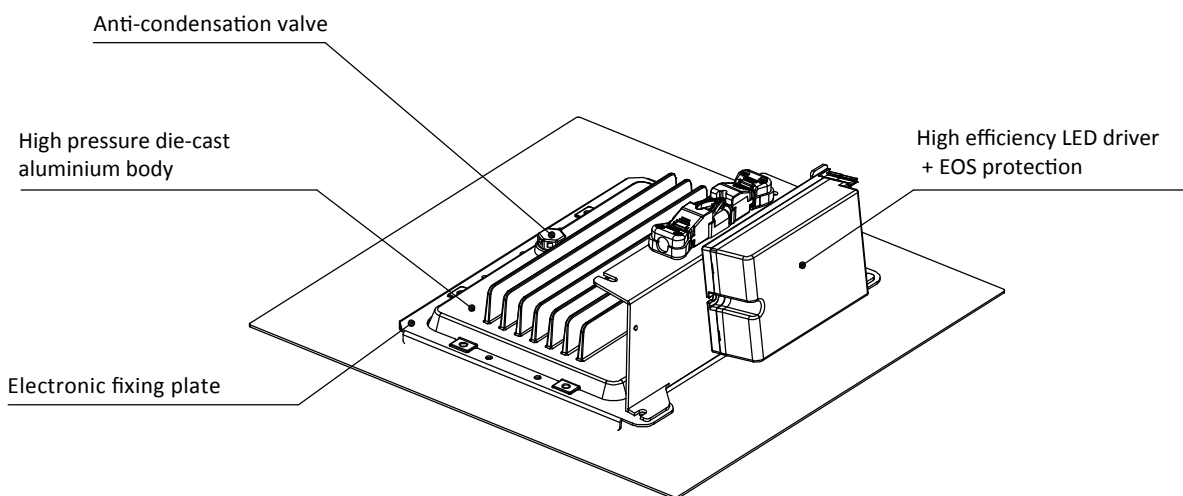
- D1: Time frame ON - 23:59 → Power 100%
- D2: Time frame 00:00 - 00:59 → Power 75%
- D3: Time frame 01:00 - 01:59 → Power 50%
- D4: Time frame 02:00 - 03:59 → Power 25%
- D5: Time frame 04:00 - OFF → Power 60%

CLO FULL Function

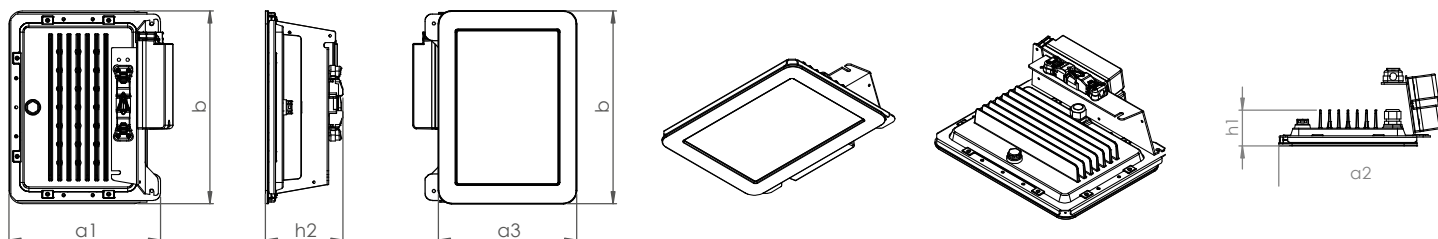


The CLO function allows to gradually increase the level of light output over time from a lower initial luminous flux up to 100%, thus compensating the luminous flux degradation of the LED module during the lighting fixture entire lifetime. It can also serve as a means to reduce energy consumption.

> Exploded view drawing



Urban Kit



↔	Dimensions	a1 = 208 mm a2 = 225 mm a3 = 190 mm b = 265 mm	⚖	Weight	3,5 kg
		h1 = 50 mm h2 = 107 mm			

URBAN KIT					
Product item code [ss-mm-wwW-xyyy-zz-tt-uu]	Power [wwW]	Nominal luminous flux [xyyy]			
		4070 5070 5770	3070	2770 4080	2270 2780 3080 5790
	W	lm			
URBAN-KIT-15W-xyyy-zz-rr	14,9	2.661	2.537	2.336	2.185
URBAN-KIT-20W-xyyy-zz-rr	20,0	3.476	3.313	3.051	2.854
URBAN-KIT-30W-xyyy-zz-rr	30,0	5.057	4.820	4.436	4.142
URBAN-KIT-40W-xyyy-zz-rr	40,3	6.598	6.288	5.765	5.380
URBAN-KIT-50W-xyyy-zz-rr	50,5	9.055	8.632	7.992	7.400
URBAN-KIT-60W-xyyy-zz-rr	60,0	10.488	9.997	9.171	8.566
URBAN-KIT-70W-xyyy-zz-rr	70,0	11.996	11.436	10.462	9.764

> Item code composition

Series	Model	Power	CCT	CRI	Optic	Optical compartment IP degree	Electrical compartment IP degree
SS	MM	WW	XX	YY	ZZ	TT	UU
URBAN	KIT	15W 50W 20W 60W 30W 70W 40W	22 2.200 K 27 2.700 K 30 3.000 K 40 4.000 K 50 5.000 K 57 5.700 K	70 CRI>70 80 CRI>80 90 CRI>90	*** Symmetric (** = from 00 to 99) A** Asymmetric (** = from 1 to 99) AB** Asymmetric (** = from 1 to 99) R** Rotosymmetric (** = from 1 to 99) E** Elliptic (** = from 1 to 99) PCDX** Right Asymmetric (** = from 1 to 99) Left Asymmetric (** = from 1 to 99)	20 IP 20 66 IP 66	20 IP 20 66 IP 66

> Real flux multiplier - Light intensity class

In order to calculate the real flux of the device, the efficiency of the chosen optic must be multiplied by the nominal light flux value shown in the table.

Each optic corresponds to a class of light intensity G*.

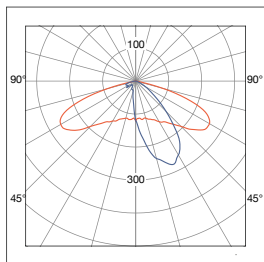
A2	0,79	G*4	A3	0,87	G*6	A4	0,83	G*4	A7	0,79	G*2	A8	0,82	G*1
A9	0,85	G*4	E3	0,87	G*6	E4	0,83	G*6	R1	0,82	G*6	100	0,86	G*6

> Photometries

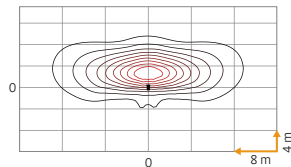


Asymmetric

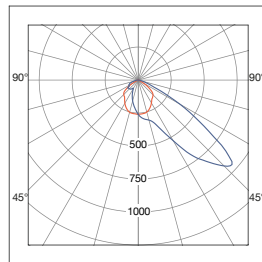
[A2] - Asymmetric 150°x35°



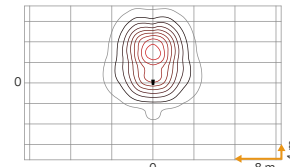
H = 8 m



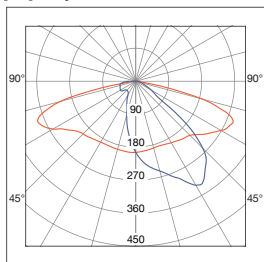
[A3] - Asymmetric 120°x50°



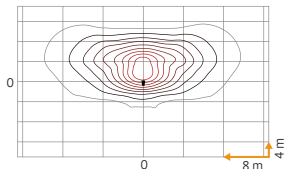
H = 8 m



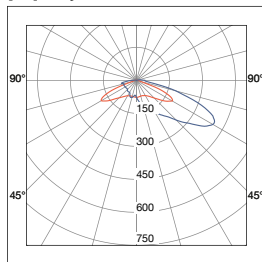
[A4] - Asymmetric 145°x65°



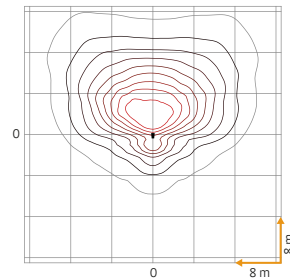
H = 8 m



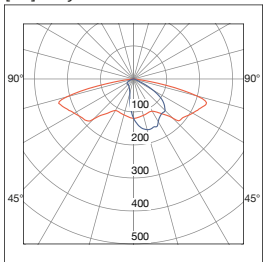
[A7] - Asymmetric 120°x80°



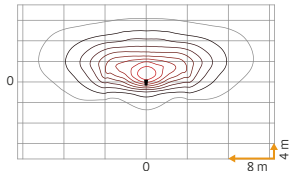
H = 8 m



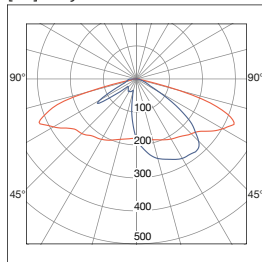
[A8] - Asymmetric 155°x55°



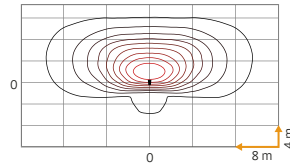
H = 8 m



[A9] - Asymmetric 150°x55°

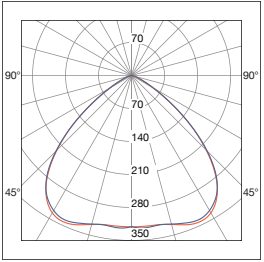


H = 8 m

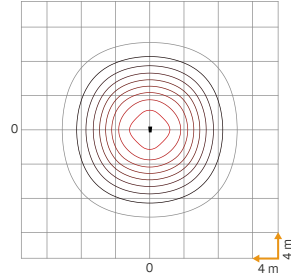


Symmetric

[100] - Symmetric 100°

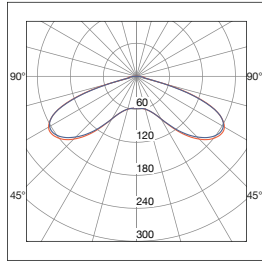


H = 8 m

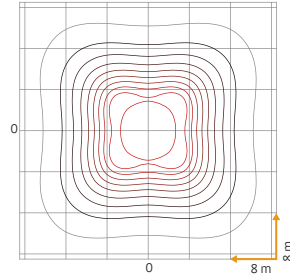


Rotosymmetric

[R1] - Rotosymmetric 140°x140°

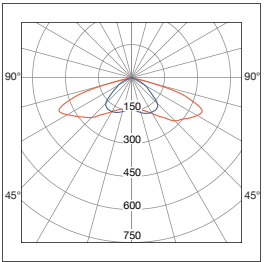


H = 8 m

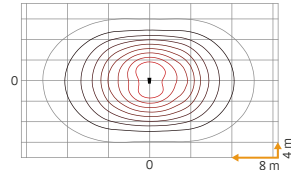


Elliptic

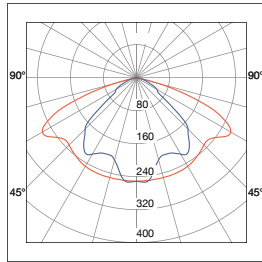
[E3] - Elliptic 145°x110°



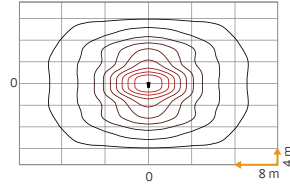
H = 8 m



[E4] - Elliptic 140°x100°



H = 8 m



More photometries are available on request

Urban Kit

> Installations





NITEKO SRL

Viale della Libertà, 8
74020 Montemesola (TA) - ITALY

T. [+39] 099 567 12 19

F. [+39] 099 567 11 12

www.niteko.com

info@niteko.com